

Enterprise-sized security for every-sized business

All of the technology, security, and services you need to work more productively, communicate more securely, and collaborate more efficiently are now in **one comprehensive package.**



Enterprise-grade security

Artificial intelligence joins forces with human ingenuity to keep you secure long before you are even in harm's way.



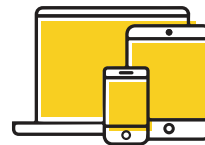
Managed MS365

Make the most of the tools you have available to you - by letting us handle all of the management.



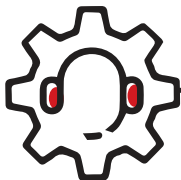
Rapid incident Response

Ember365 comes with a series of "Playbooks" that are designed to instantly address, neutralize, and move on from threats so your business never stops running.



Device management

Work from anywhere, knowing that your company's devices and data are secure and optimized, whether it's at a dining room table or conference room table.



Help Desk & Support

Your support team is always here to get you back on track as smoothly, quickly, and pleasantly as possible (because we know that no one WANTS to call IT Support).



Governance, Risk, + Compliance Management

Rest easy that your data is secure and compliant based on your business's needs. Nothing more and (definitely) nothing less.

PLUS

Sensible pricing structure that ensures the optimal amount of security and compliance coverage with no waste for your needs

Access to enterprise-grade data security never before available to small-mid-sized enterprises powered by our exclusive partnership with Red Canary

EMBER365™

EMBERIT.COM/365